

路竹廠 Luchu Plant

鋼結構專業製造、安裝

Steel Structure Manufacture & Installation

燕巢廠 Yenchao Plant



運搬起重機械設備設計、製造、安裝

Crane Equipment Design, Manufacture & Installation





## 目錄

## CONTENTS

前言	1
Foreword	
經營理念與方針	2
Management Philosophy & Mandates	
經營狀況	3
Business Status	
工程事業部—路竹廠(鋼結構製造、安裝)	4
Engineering Business Division—Luchu Plant (Steel Structure Manufacture & Installation)	
工程事業部—燕巢廠(運搬起重機械設備設計、製造、安裝)	6
Engineering Business Division—Yenchao Plant (Crane Equipment Design, Manufacture & Installation)	
工程實績	8
Reference	
A- 大樓鋼構 / Steel Structure of Building	
B- 設備鋼構 / Steel Structure of Equipment	
C- 廠房鋼構 / Steel Structure of Plant	
D- 其他 / Others	
E- 運搬起重機械設備 / Crane Equipment	
F- 運搬起重機械設備—參考規格 / Crane Equipment—Reference Specifications	
品質保證	20
Quality Assurance	



## 前言

## FOREWORD

### 燁輝企業之工程事業部

前身為「聯綱重工股份有限公司」，創立於1989年11月，於2005年8月30日併入燁輝企業股份有限公司成為「工程事業部」。工程事業部設有「路竹廠」與「燕巢廠」，合計土地面積108,536m<sup>2</sup>，為鋼結構與運搬起重機械設備專業設計、製造及安裝之專業製造廠。

路竹廠可承接超高鋼骨大樓、大型鋼結構廠房及橋樑等製造與安裝，擁有BH型鋼、BOX柱鋼生產線、二次型料加工線及各式CNC泛用加工設備，月產能可高達10,000公噸。

燕巢廠之前身為「聯碩企業股份有限公司」，可承製運搬起重機械設備，為台灣具備設計能力及生產規模最大之專業及貨櫃起重機械製造廠，並擁有國內外享有盛名「 AIRSTAR 擎天牌」運搬起重機械設備的專屬品牌，具有生產超過1,000部天車及400公噸一貫作業鋼廠煉鋼工場製鋼盛鋼桶起重機之製作經驗。

### Yieh Phui's Engineering Business Division

**Lien Kang Heavy Industrial Co., Ltd.** was established in November 1989. It was incorporated with **Yieh Phui Enterprise Co., Ltd.** on August 30<sup>th</sup>, 2005 and named "Engineering Business Division". The total land area is 108,536m<sup>2</sup> as well as including Luchu Plant and Yenchao Plant. This Division specializes in the design, manufacture and installation of steel structure and crane equipment.

For manufacture and installing buildings, factories and bridges, the Luchu Plant has built-up H-beams and BOX column section lines, a steel section second processing line, and CNC universal processing equipment. This Plant has a monthly design capacity up to 10,000 tons.

The Yenchao Plant, the forerunner of "**AIR-STAR Enterprise Co., Ltd.**", has facilities to design, manufacture and install cranes. It is the largest crane producer in Taiwan and owns the internationally-known brand for crane equipment, " AIRSTAR 擎天牌". Moreover, it has the experience of producing more than 1,000 cranes and ladle cranes with a 400-ton capacity in the steelmaking of the integrated steel mill.

# Management Philosophy & Mandates 經營理念與方針

## 義聯集團 經營理念

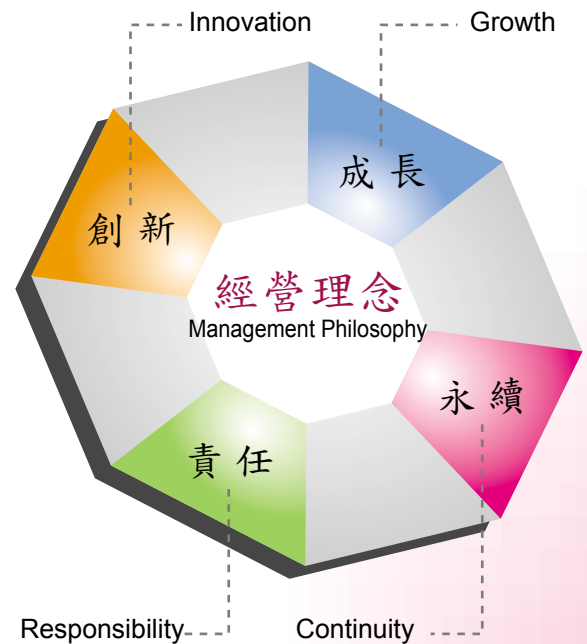
Management Philosophy of **E UNITED GROUP**

創新  
Innovation

成長  
Growth

責任  
Responsibility

永續  
Continuity



## 燁輝企業 經營方針

Enterprise Mandates of **Yieh Phui**

### 創造利潤

利潤是企業生存的基本條件，為客戶提供更多，更佳之獲利條件，以回饋社會，並為公司爭取更多的利益，以分享員工與股東，均為 燁輝 全體員工一致努力的方向。

### 精益求精

創新改善是企業進步的原動力，秉持「沒有最好，只有更好」及「專業是我們的優勢，品質是我們的榮譽」之理念，在產品品質、效率、成本與交期上追求完美，提供客戶更好之服務，不斷地進步，是我們一向之目標。

### 贏得信任

誠信是企業商譽的第一要素，不僅要贏得客戶對 燁輝 全部信任，更要贏得股東與員工對公司充分之信心，此為本公司一貫之理念。

### Profit Creation

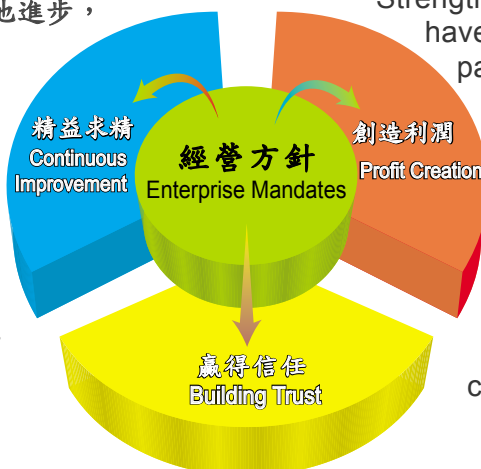
Profitability is the fundamental criterion for the survival of a corporation. **Yieh Phui's** employees endeavor to provide our customers with more and better opportunities to achieve profitability as well as to fulfill our social obligations and earn a profit that can be shared between the employees and the shareholders.

### Continuous Improvement

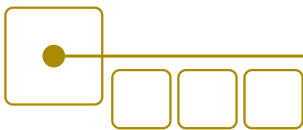
Continuous improvement is the primary driving force for the evolution of a corporation. Striving for perfection in quality, efficiency, cost control, and on-time delivery by following the mottos "There is Always Room for Improvement" and "Professionalism is Our Strength and Quality Products are our Pride", have been the main objectives of our company.

### Building Trust

Trustworthiness is the primary element in establishing the credibility of a corporation. Our company believes that the earning of employees' and shareholders' trust is just as important as earning the trust of customers.







## 工程事業部業績圖

### Project Weight & Sales Revenue of Engineering Business Division

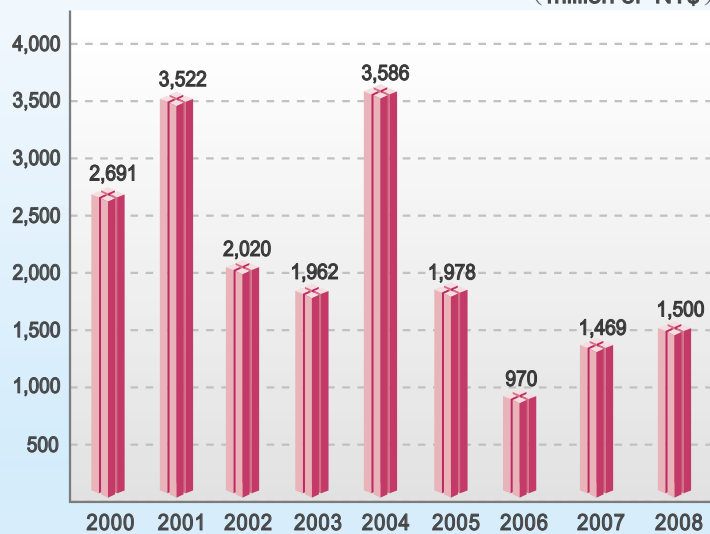
鋼結構承攬重量  
Project Weight of Steel Structure

(噸,mt)



工程事業部營業收入

Sales Revenue of Engineering Business Division (million of NT\$)



# Engineering Business Division—Luchu Plant 工程事業部—路竹廠



## 鋼結構製造、安裝

### Steel Structure Manufacture & Installation

所在地：82147 高雄市路竹區三爺里復興路909號

電話：+886-7-6974428

創設日期：1989年11月

主要產品：大樓鋼構、廠房鋼構、橋樑鋼構之製造、  
安裝

Location: No. 909, Fuxing Road, Luzhu District,  
Kaohsiung City, Taiwan 82147

Tel: + 886-7-6974428

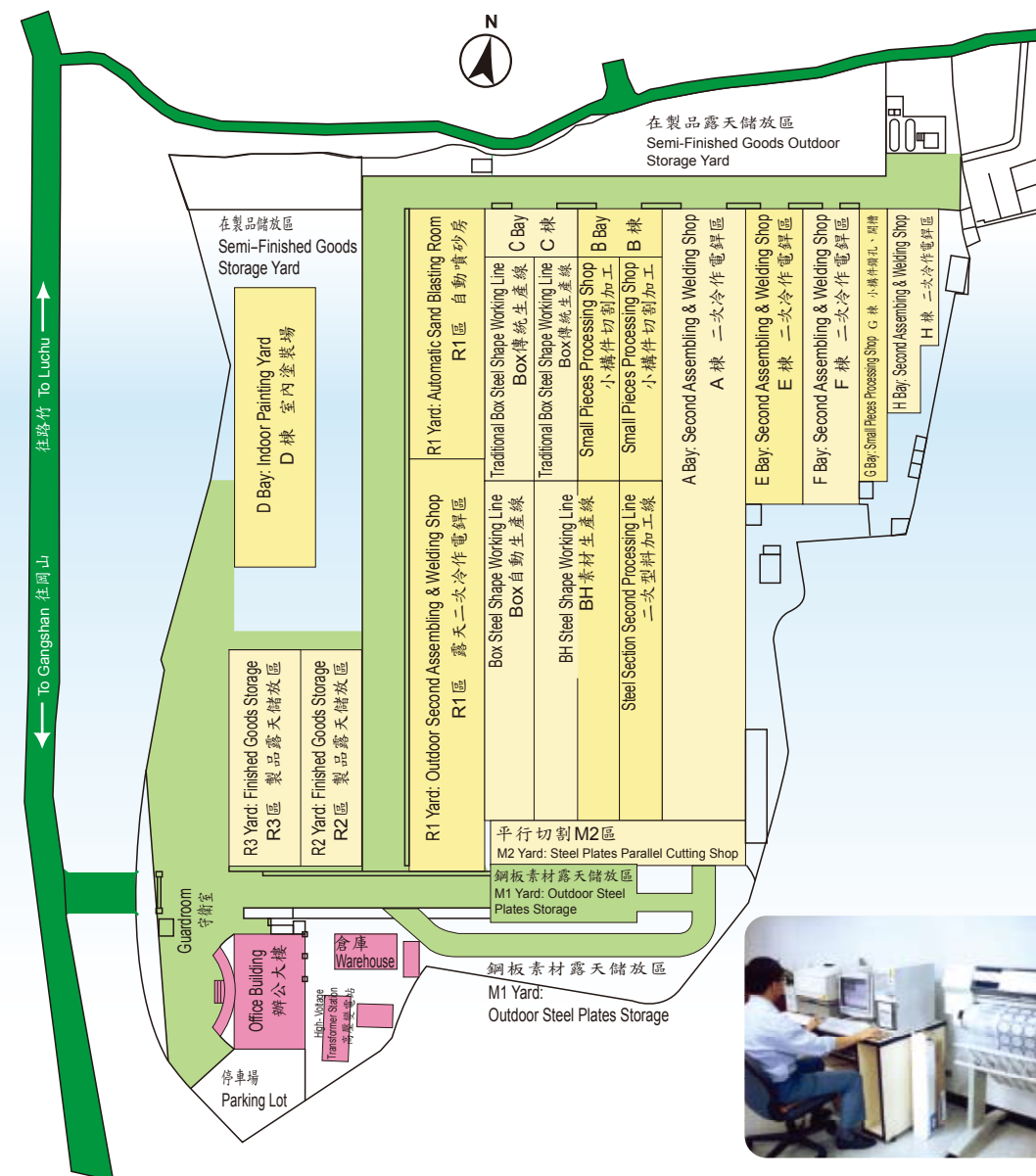
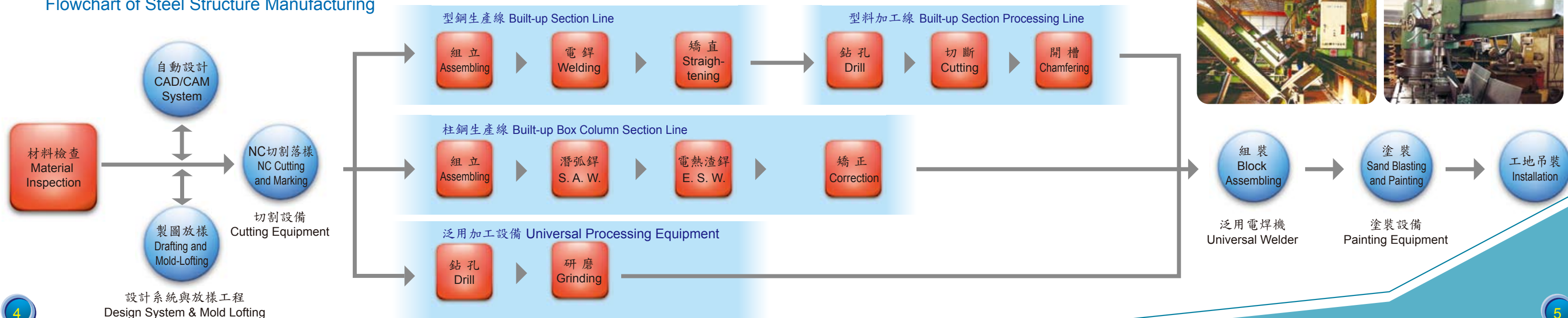
Established Date: November, 1989.

Main Products: The manufacture and installation of

building steel structure, plant steel  
structure, bridge steel structure and  
other engineerings.

## 鋼結構製造流程

### Flowchart of Steel Structure Manufacturing



## 平面配置圖

### Plant Layout

土地面積：75,131m<sup>2</sup>

廠房面積：34,146m<sup>2</sup>

Land Area / 75,131m<sup>2</sup>

Factory Area / 34,146m<sup>2</sup>







# Engineering Business Division—Yenchao Plant 工程事業部—燕巢廠



## 運搬起重機械設備設計、製造、安裝

### Crane Equipment Design, Manufacture & Installation

所在地：82446高雄市燕巢區中安路600號

電話：+886-7-6163001

創設日期：1987年9月

主要產品：架空型起重機、門型起重機、軌道式貨櫃  
跨載機之設計、製造、安裝

行銷品牌： 擎天牌

Location: No. 600, Zhong'an Road, Yenchao District  
Kaohsiung City, Taiwan 82446

Tel: + 886-7-6163001

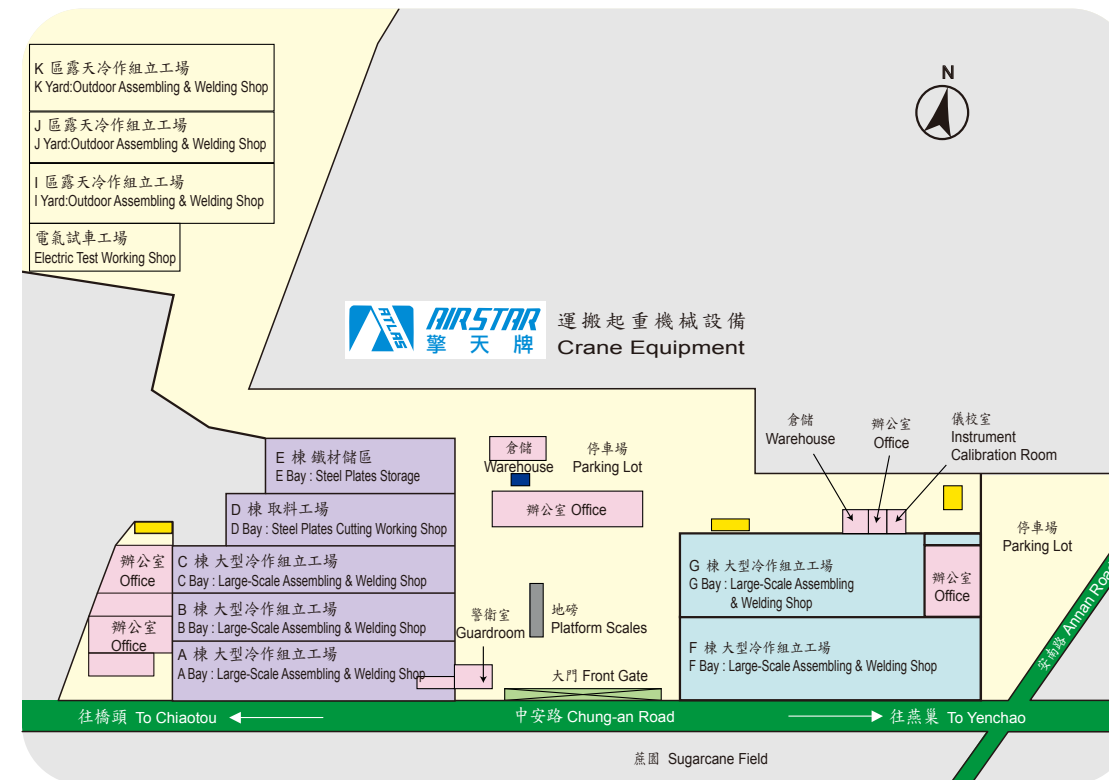
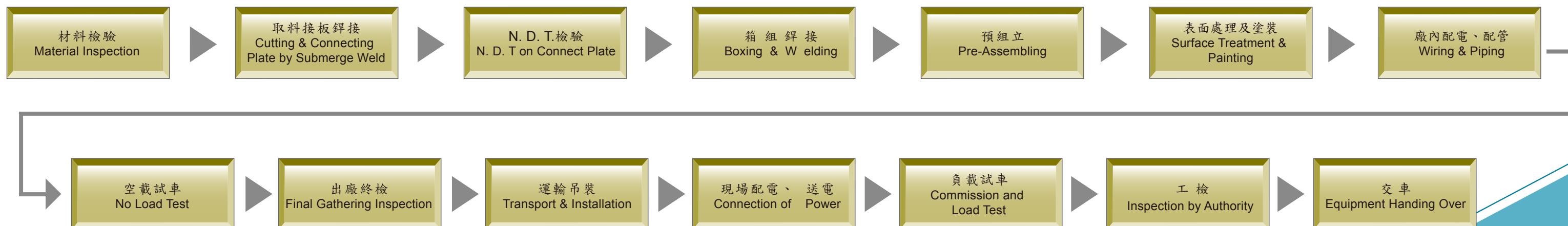
Established Date: September, 1987.

Main Products: The design, manufacture and installation  
of EOT cranes, gantry cranes and rail  
mounted gantry container cranes.

Famous Brand:  擎天牌

## 運搬起重機械設備製造流程

### Flowchart of Crane Equipment Manufacturing



## 平面配置圖

### Plant Layout

土地面積：33,405m<sup>2</sup>

廠房面積：17,818m<sup>2</sup>

Land Area / 33,405m<sup>2</sup>

Factory Area / 17,818m<sup>2</sup>





**A-大樓鋼構**

A-Steel Structure of Building



A-1. 高雄義大醫院  
E-DA Hospital Building, Kaohsiung.

(13,196mt)



A-2. 台北新店寶路集合住宅大樓 (4,702mt)  
Pro Architecture Housing Building,  
Sindian, Taipei.



A-3. 台北內湖光寶科技總部大樓 (6,357mt)  
Lite-On Technology Corporation-  
Technology Building, Neihu, Taipei.



A-4. 新竹竹南國家衛生研究院 (14,108mt)  
National Health Research Institutes Building,  
Zhunan, Hsinchu.



A-5. 新竹風城購物中心  
Windance Shopping Center, Hsinchu.

(51,707mt)



A-6. 高雄慶富集團營運總部大樓  
Ching Fu Group Headquarters Building, Kaohsiung.

(2,458mt)



A-7. 台北101大樓裙樓 (4,300mt)  
Mall Building of Taipei 101, Taipei.



A-8. 台中由鉅三希住宅大樓 (9,000mt)  
San-Xi Building of Yo Ji Construction,  
Taichung.

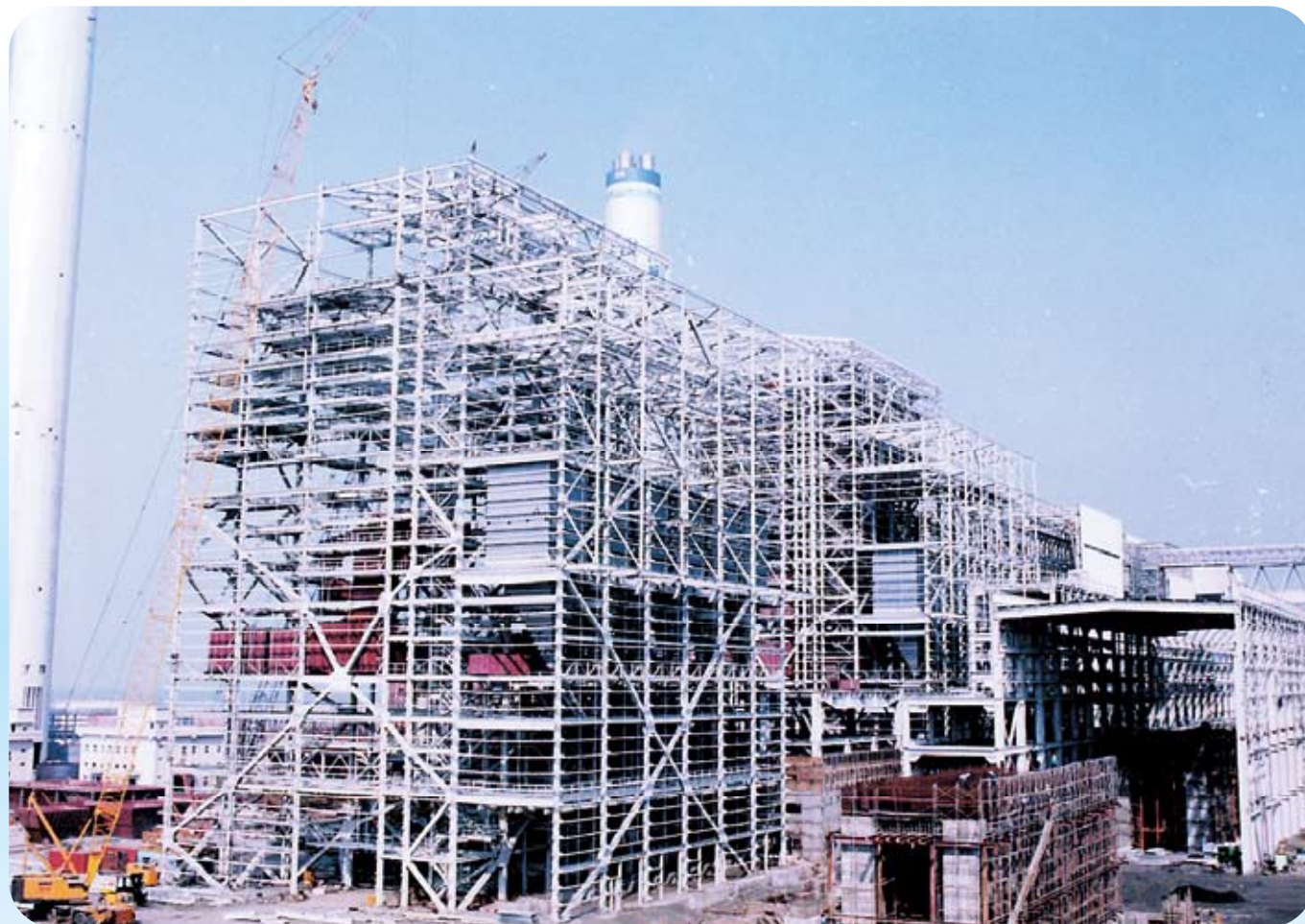


A-9. 花蓮慈濟大學教職員宿舍 (5,372mt)  
Tzu-Chi University Faculty Dorm Building,  
Hualien.



B-設備鋼構

B-Steel Structure of Equipment



B-1. 雲林麥寮台塑石化鍋爐廠  
Boiler Shop Steel Structures, Formosa Petrochemical Corp., Mailiao, Yulin.

(17,520mt)



B-5. 雲林麥寮台灣塑膠LLDPE廠  
LLDPE Plant Steel Structures, Formosa Plastics Corp., Mailiao, Yulin.

(2,842mt)



B-7. 雲林麥寮台塑石化中間區輸煤機 (6,000mt)  
Coal Conveyor Steel Structures,  
Formosa Petrochemical Corp.,  
Mailiao, Yulin.



B-8. 嘉義新港南亞塑膠CCL三廠 (7,600mt)  
CCL Plant No.3 Steel Structures,  
Nan Ya Plastics Corp.,  
Shingang, Chiayi.



B-2. 雲林麥寮台灣化學纖維PTA II廠 (4,841mt)  
PTA II Plant Steel Structures,  
Formosa Chemicals & Fiber Corp.,  
Mailiao, Yulin.



B-3. 雲林麥寮台灣化學纖維P.P.廠 (8,025mt)  
P. P. Plant Steel Structures,  
Formosa Chemicals & Fiber Corp.,  
Mailiao, Yulin.



B-4. 高雄岡山燐聯鋼鐵煉鋼廠 (13,000mt)  
Refinery Plant Steel Structures,  
Yieh United Steel Corp.,  
Gangshan, Kaohsiung.



B-6. 雲林麥寮台灣化學纖維海豐電廠  
Haifong Power Station Steel Structures,  
Formosa Chemicals & Fiber Corp., Mailiao, Yulin.

(9,700mt)



B-9. 雲林麥寮台灣化學纖維海豐電廠 (11,392mt)  
公用管架(A1~A6)及(C1~C3)  
Haifong Power Station Pipe Rack (A1~A6) &  
(C1~C3), Formosa Chemicals & Fiber Corp.,  
Mailiao, Yulin.





## C-廠房鋼構

### C-Steel Structure of Plant



C-1. 台中友達光電一期LCM廠  
Phase I LCM Steel Structures, AU Optonics Corp., Taichung.

(22,472mt)



C-2. 台南瀚宇彩晶FAB-4廠  
FAB-4 Plant Steel Structures,  
HannStar Display Corp.,  
Tainan.



C-3. 台中友達光電二期CUB廠  
Phase II CUB Steel Structures,  
AU Optonics Corp.,  
Taichung.



C-4. 雲林旭硝子發般科技廠房二期  
與三期  
Phase II & III Steel Structures,  
ASAHI Glass Fine Techno Taiwan Co., Ltd.,  
Yunlin.



C-5. 桃園廣輝電子LINE III廠ARRAY棟  
LINE III Plant ARRAY Steel Structures, Quanta Display Inc., Taoyuan.

(23,900mt)



C-6. 新竹旺宏電子三廠  
FAB Plant III Steel Structures, Macronix International Co., Ltd., Hsinchu.

(26,684mt)



C-7. 台南台灣凸版國際彩光H11廠  
H11 Plant Steel Structures,  
Toppa CFI (Taiwan) Co., Ltd.,  
Tainan.



C-8. 台中矽品精密中山廠  
Electronics Plant Steel Structures,  
Siliconware Precision Industries Co., Ltd.,  
Taichung.

(5,526mt)



C-9. 高雄華泰電子測試廠  
Testing Plant Steel Structures,  
Orient Semiconductor Electronics, Ltd.,  
Kaohsiung.

(6,570mt)



D - 其他  
D-Others



D-1. 台中火力電廠#9,#10 FGD排煙脫硫系統廠房 (1,528mt)  
#9,#10 FGD System Plant Steel Structures, Taiwan Power Company, Taichung.



D-2. 高雄岡山燐鋼鐵不銹鋼熱軋廠 (1,300mt)  
整廠設備製造、安裝、配管  
Hot Rolling Mill Equipment Manufacture & Installation,  
Yieh United Steel Corp., Gangshan, Kaohsiung.



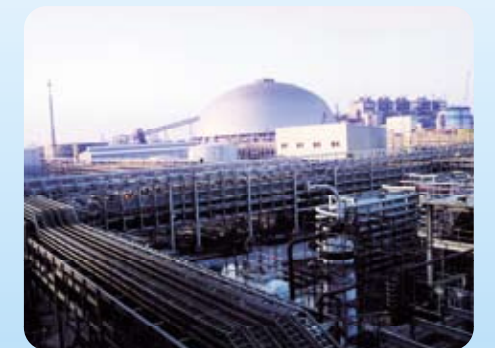
D-3. 高雄市建國橋 (1,315mt)  
Chien-Kuo Bridge, Kaohsiung City.



D-4. 高雄中鋼燒石灰工場設備安裝 (2,250mt)  
Steelbinding Kiln Equipment Installation, China Steel Corp., Kaohsiung.



D-5. 台北士林垃圾焚化廠 (2,610mt)  
Shi-Lin Refuse Incinerator, Taipei.



D-6. 雲林麥寮台灣塑膠HDPE廠統包工程 (1,782mt)  
HDPE Plant Turn-key Project,  
Formosa Plastics Corp., Mailiao, Yulin.



D-7. 高雄義守大學體育館 (410mt)  
I-Shou University Gymnasium, Kaohsiung.



## E-運搬起重機械設備

### E-Crane Equipment



E-1. 高雄港長榮海運軌道式貨櫃跨載機  
Rail Mounted Gantry Container Crane, Evergreen Marine Corp., Kaohsiung Harbor.



E-2. 台中港萬海海運軌道式貨櫃跨載機  
Rail Mounted Gantry Container Crane, Wan Hai Lines Ltd., Taichung Harbor.



E-3. 高雄港中國航運超霸型橋式貨櫃起重機  
Super Panamax Container Crane, Orient Overseas Container Line, Kaohsiung Harbor.



E-4. 高雄港陽明海運超霸型橋式貨櫃起重機  
Super Panamax Container Crane, Yang Ming Marine Transport Corp., Kaohsiung Harbor.



E-5. 台中中龍鋼鐵100/30 t × 28.6 m 爐渣起重機  
100/30 t × 28.6 m Slag Handling Crane, Dragon Steel Corporation, Taichung.



E-6. 台中豐興鋼鐵85/35 t × 25.5 m 製鋼盛鋼桶起重機  
85/35 t × 25.5 m Ladle Crane, Feng Hsin Iron & Steel Co., Ltd., Taichung.



E-7. 台中豐興鋼鐵200/70 t × 25.5 m 製鋼盛鋼桶起重機  
200/70 t × 25.5 m Ladle Crane, Feng Hsin Iron & Steel Co., Ltd., Taichung.



E-8. 高雄岡山聯鋼鐵190 t × 25 m 製鋼盛鋼桶起重機  
190 t × 25 m Ladle Crane, Yieh United Steel Corp., Gangshan, Kaohsiung.



E-9. 桃園東和鋼鐵140/60 t × 25 m 製鋼加料起重機  
140/60 t × 25 m Charging Crane, Tung Ho Steel Enterprise Corp., Taoyuan.



## F-運搬起重機械設備—參考規格

### F-Crane Equipment—Reference Specifications

燕巢廠製程能力可依客戶多樣化需求，週全協助規劃適合各種環境、噸數、等級之固定起重機運搬設備。

The Yenchao Plant has the capacity to meet customers' various needs, providing proper fixed crane equipment for diversified environment, sort, rated load and service class.

長榮海運股份有限公司

Evergreen Marine Corp., Ltd.

軌道式貨櫃跨載機 Rail Mounted Gantry Container Crane

跨距	SPAN	33 m
最大荷重	RATED LOAD	40.6 t
揚程	HEIGHT OF LIFT	16.2 m
捲揚速度	HOIST SPEED	35/70 m/min, stepless
橫行速度	TROLLEY SPEED	100 m/min, stepless
直行速度	BRIDGE SPEED	100 m/min, stepless
起重機等級	SERVICE CLASS	CMAA E



慶富造船股份有限公司

Ching Fu Shipbuilding Co., Ltd.

造船廠用起重機 Shipbuilt Handling Crane

跨距/拱長	SPAN/GIRDER	33.8 m/67.8 m
最大荷重	RATED LOAD	200(120-80) t
揚程	HEIGHT OF LIFT	42 m
捲揚速度	HOIST SPEED	3 m/min, stepless
橫行速度	TROLLEY SPEED	18/9 m/min, stepless
直行速度	BRIDGE SPEED	25/12.5 m/min, stepless
起重機等級	SERVICE CLASS	CMAA A



台灣電力股份有限公司(台中馬鞍水力電廠)

Taiwan Power Co., Ltd. (Ma An Hydropower Plant, Taichung)

水力發電廠用起重機 Turbine Room Crane

跨距	SPAN	17 m
最大荷重	RATED LOAD	220/45/10 t
揚程	HEIGHT OF LIFT	22 m
捲揚速度	HOIST SPEED	4 m/min, stepless
橫行速度	TROLLEY SPEED	10 m/min, stepless
直行速度	BRIDGE SPEED	20 m/min, stepless
起重機等級	SERVICE CLASS	CMAA A



豐興鋼鐵股份有限公司

Feng Hsin Iron & Steel Co., Ltd.

爐渣起重機 Slag Handling Crane

跨距	SPAN	7 m
最大荷重	RATED LOAD	60 t
揚程	HEIGHT OF LIFT	16 m
捲揚速度	HOIST SPEED	8 m/min, stepless
橫行速度	TROLLEY SPEED	10 m/min, stepless
直行速度	BRIDGE SPEED	30 m/min, stepless
旋轉台車速度	TROLLEY SWING ROTARY SPEED	1/0.25 m/min, stepless
旋轉台車角度	TROLLEY SWING ROTARY ANGLE (DEGREE)	-10~+100
起重機等級	SERVICE CLASS	CMAA D



東和鋼鐵企業股份有限公司

Tung Ho Steel Enterprise Corp.

製鋼盛鋼桶起重機 Ladle Crane

跨距	SPAN	21 m
最大荷重	RATED LOAD	225/80 t
揚程	HEIGHT OF LIFT	22m
捲揚速度	HOIST SPEED	10 m/min, 5 steps
橫行速度	TROLLEY SPEED	60 m/min, 5 steps
直行速度	BRIDGE SPEED	100 m/min, 5 steps
起重機等級	SERVICE CLASS	CMAA F



安鋒鋼鐵股份有限公司

An Feng Steel Co., Ltd.

鑄皮坑抓斗起重機 Scale Pit Crane

跨距	SPAN	15 m
最大荷重	RATED LOAD	10 t
揚程	HEIGHT OF LIFT	20 m
捲揚速度	HOIST SPEED	16 m/min, stepless
開閉速度	GRAB SPEED	16 m/min, stepless
橫行速度	TROLLEY SPEED	25 m/min, 5 steps
直行速度	BRIDGE SPEED	40 m/min, 5 steps
起重機等級	SERVICE CLASS	CMAA E





優良的服務、準確之交期及嚴格的品管，為企業永續經營的不二法門。工程事業部之「路竹廠」與「燕巢廠」分別由經濟部標準檢驗局BSMI與台灣SGS檢驗科技公司，認證為 ISO 9001:2008 合格認證工廠。

燁輝企業秉持企業標語「*Always the best* 永遠最好」與品質標語「**鋼之美 唯燁輝**」，要以卓越之管理，提供最優質之產品與服務，讓客戶 100% 滿意。

Excellent service, on-time delivery along with strict quality control contribute to sustainability of our enterprise. Engineering Business Division, Luchu and Yenchao Plant, has got ISO 9001:2008 certificates approved by BSMI and SGS.

**Yieh Phui** coined the company slogan "*Always the best* 永遠最好" and quality slogan "**Finest Steel at Yieh Phui**" to show our commitment in maintaining excellent management, product and services, as well as satisfying our customers 100%.

尺寸檢驗  
Dimension Inspection



滲透探傷檢驗  
Penetration Inspection



磁粉探傷檢驗  
Magnetic Inspection



超音波探傷檢驗  
Ultrasonic Inspection



油漆膜厚檢驗  
Paint Film Thickness Inspection



萬能試驗機  
Universal Testing Machine







高雄本廠/Yieh Phui Head Office (Kaohsiung Works)  
82544 高雄市橋頭區芋寮里芋寮路369號  
總機：+886-7-6117181  
統一編號：75947936

369, Yuliao Road, Qiaotou District,  
Kaohsiung City 82544, Taiwan (R.O.C.)  
TEL：+886-7-6117181  
WEBSITE：http://www.yiehphui.com.tw

鋼之美 唯燁輝  
Finest Steel at Yieh Phui



路竹廠 Luchu Plant  
ISO 9001 Registered Firm  
品質管理系統  
驗證通過工廠



燕巢廠 Yenchao Plant  
ISO 9001 Registered Firm  
品質管理系統  
驗證通過工廠

### 路竹廠(鋼結構)

#### Luchu Plant (Steel Structure)

82147 高雄市路竹區三爺里復興路909號  
909, Fuxing Road, Luzhu District, Kaohsiung City  
82147, Taiwan (R.O.C.)  
TEL：+886-7-6974428  
FAX：+886-7-6974088  
E-MAIL：structure@yiehphui.com.tw



### 燕巢廠(運搬起重機械設備)

#### Yenchao Plant (Crane Equipment)

82446 高雄市燕巢區角宿里中安路600號  
600, Zhong-an Road, Yanchao District,  
Kaohsiung City 82446, Taiwan (R.O.C.)  
TEL：+886-7-6163001  
FAX：+886-7-6161000  
E-MAIL：crane@yiehphui.com.tw

